



## Installation instructions

Item No.:CMS101 CMS102 CMS103 CMS104

### CORD MANAGEMENT SYSTEM

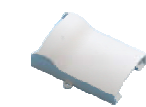
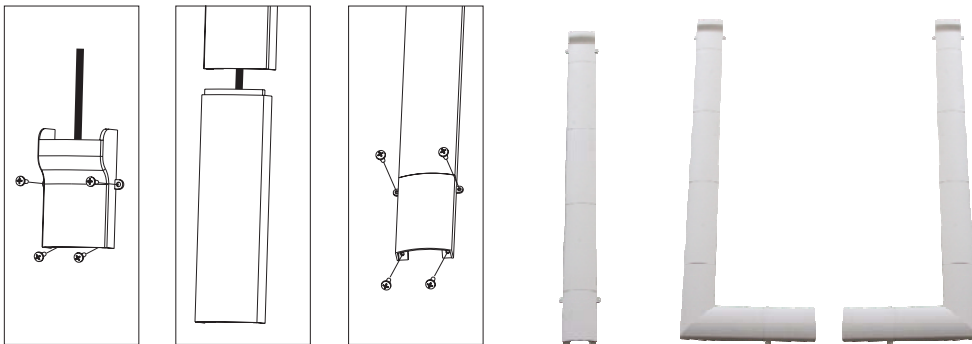
Our Cord Management System is the simple solution for concealing and grouping the variety of cords in your home theatre.

#### Before you begin

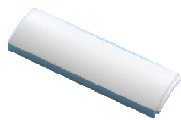
\*Caution: To prevent damage to the Cord Management System or to the equipment that is attached to it, please follow the instructions carefully.

\*When painting the Cord Management System, please paint and allow to dry completely BEFORE installation on a wall.

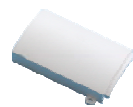
\*After determining the position, follow the diagram below to install Cord Management System.



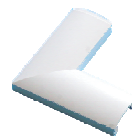
Cable IN cover



Inner Cable cover



Cable OUT cover



Right angle cover



Left angle cover



Right cross wall corner cover



Left cross wall corner cover